



Trout Mountain Forestry Newsletter

ISSUE 9

SEPTEMBER 5TH

HIGHLIGHTS:

| | |
|---|---|
| Weed Control Grants | 1 |
| PDX Office Downsize | 1 |
| Corvallis office move | 1 |
| Shiver River Harvest | 2 |
| Young Plantation thinning at Chehalem Ridge | 2 |
| Log Market Update | 3 |
| Champion Tree | 3 |
| FALL EVENT | 4 |



Summer was busy at Trout Mountain Forestry. This year we have more harvests going on than we've had since 2006. The log market is still volatile (see article, page 3) but this spring and summer we've seen some of the best log prices in years. In other news...our Portland office had some construction (see below), and our Corvallis office moved! (See new contact information below.)

CORVALLIS OFFICE

The building in which our Corvallis office was located was sold in May, forcing us to relocate. Our new Corvallis office is located smack-dab in the middle of downtown Corvallis on the corner of 3rd and Madison (2nd floor with entry on Madison Street.) Just two blocks from the riverfront park and surrounded by dozens of great local businesses and restaurants, we are enjoying the energy and amenities of the Corvallis downtown district. Stop by and visit when you are in the neighborhood!



New Corvallis Office Building

**Trout Mountain Forestry
Corvallis Office**
260 SW Madison Avenue
Suite 117
Corvallis, OR 97333



False brome—common invasive weed

WEED CONTROL GRANTS

Visit <http://www.oregon.gov/ODA/PLANT/WEEDS/pages/grantindex.aspx> for information about grant funding through the State of Oregon for noxious weed control projects related to the protection and enhancement of watersheds and fish and wildlife. Call us if you need assistance applying!

PORTLAND OFFICE

You've seen our ads for a sublet at our Portland office space in previous newsletters. Well, it got to be a part time job keeping our extra space rented out so we gave it over to a neighbor in our building who constructed a wall, making our suite less than half the size but still enough room for the 4 of us and light and airy thanks to the high ceilings and large sky light. We still have a conference room so come by if you'd like to meet with us in person sometime.



Old office space—we used to rent out the front part



Blue wall is new—now we inhabit the front part!

Come visit us at the Portland office anytime: 1800 NW Upshur Street, Suite 201 Portland, OR 97209

Phone 503-222-9772—www.troutmountain.com—marla@troutmountain.com

Shiver River Harvest Shiver River is a 172-acre forest and farm property spanning Rock Creek four miles west of Philomath Oregon. The property has been in the Picht and Brent families since 1920. Trout Mountain Forestry has been assisting the family in managing this special property since 1984, during which time we have overseen 6 individual thinning harvests. Before Trout Mountain managed the property, Scott Ferguson’s forestry mentor conducted harvests there as early as 1965! The forests of Douglas-fir, grand fir, and legacy oak are split by a broad riparian forest of alder and ash.

One of the early thinnings we managed at Shiver River was in 1998. The stand was then 30 years old and this thinning was one of the first FSC certified harvests in the Pacific Northwest. This past spring, 15 years later, we came back and thinned the same 20-acre stand for the second time, at 45 years old. This thinning was done the old fashioned way - light touch, small equipment, with a winch and line that was pulled out to each tree. This approach allows for minimal stand damage and we were very happy with the results.

The family members we are currently working with are 3rd generation owners of the property. They recently created an LLC with two sisters and a brother as members. We’re always glad to see families retaining their forests over generations. The market was good in the spring for both Douglas-fir and grand fir and the family is happy with the income the harvest generated.

With some of this income we were able to improve the road access to the next 20 acres so that the next harvest can be done when market is good. We are utilizing natural regeneration to re-seed in the stand gaps, and have done so successfully in the past. Our hope is that this family forest carries on for another 3 generations!

COME TOUR THE PROPERTY! SEE PAGE 4 FOR DETAILS.



Young Plantation Thinning for Multiple Objectives at Metro’s Chehalem Ridge Natural Area

This summer marks the second round of a multi-year, young plantation thinning project at Chehalem Ridge Natural Area (CRNA), just east of Gaston, which was acquired by Portland Metro Parks and Green Spaces in 2010. These 18-20 year old plantations were established in old farm fields and many areas have over 500 trees/acre! Metro’s long-term goal is to transition these uniform plantations (a blank slate!) to a diverse and structurally complex forest with a full complement of native understory plants. Our first step in facilitating that transition has been to work with Skeans and Sons Logging of Rainier, OR and their cut-to-length harvesting system to create a mosaic of different thinning densities, gaps (for planting shrubs and trees), snags, and downed wood. Although low pulp wood prices sometimes make it tough to generate income when thinning in stands this young, so far the operation has been able to pay for itself and Metro is capitalizing on the unique stand modification opportunities afforded by working with relatively short trees with good crowns. Metro periodically conducts tours on site for the public... contact us for information if you are interested in joining for the next one!



established in old farm fields and many areas have over 500 trees/acre! Metro’s long-term goal is to transition these uniform plantations (a blank slate!) to a diverse and structurally complex forest with a full complement of native understory plants. Our first step in facilitating that transition has been to work with Skeans and Sons Logging of Rainier, OR and their cut-to-length harvesting system to create a mosaic of different thinning densities, gaps (for planting shrubs and trees), snags, and downed wood. Although low pulp wood prices sometimes make it tough to generate income when thinning in stands this young, so far the operation has been able to pay for itself and Metro is capitalizing on the unique stand modification opportunities afforded by working with relatively short trees with good crowns. Metro periodically conducts tours on site for the public... contact us for information if you are interested in joining for the next one!



NRCS funds are awarded once each year, typically in fall, so now is the time plan projects and sign up.

COST SHARE funds may be available for the following activities:

- Management plans
- Forest stand improvement
- Slash treatment
- Tree/shrub planting
- Site preparation
- Designated skid trails
- Road closure/erosion control
- Prescribed burning
- Oak savanna/woodland restoration
- Fire/fuel breaks

Please call or email Mike for more information! 503-233-2131 or mike@troutmountain.com

LOG MARKET UPDATE

Log markets have been on a roller coaster this year, behaving very much as they did last year. Higher prices in the late winter and spring caused a surge in logging, followed closely by high log production, high inventories at mills and the traditional June fade in the lumber market. The mills are telling us that seasonal market timing is important. Recently lumber prices have firmed up and we are expecting a slightly higher market for domestic Douglas-fir logs this fall. On the bright side, the housing recovery continues, and this year's log prices have been consistently \$50 to \$100 per MBF higher than in 2012.



"White wood" (hemlock and grand fir) prices have been less volatile, and for a brief period in July white wood and DF were actually the same price (at least at GP in Philomath) -- that's newsworthy! For alder too it's a different story; not being tied to housing, alder prices have been slow to rebound, and we are recommending that clients with high-quality alder wait for markets to further recover before harvesting. We haven't sold much cedar lately, but prices appear to be fairly strong.

Oregon Champion Tree discovered in Clatsop County



Back in 2009, Trout Mountain Forestry was hired by Clatsop County to develop a natural resources stewardship plan for county parks and natural areas. The first park that Barry Sims visited for that assessment was David Douglas County Park. This little known 60 acre park straddles Highway 26 just past the David Douglas summit on the way down to Seaside from Portland. It is studded with old growth trees of a variety of species, including Douglas-fir, Sitka spruce, and western hemlock. But what caught Barry's eye on that day was a tree we don't often encounter in our work - a large Pacific silver fir. Pacific silver fir is abundant in southeastern British Columbia, as well as at higher elevations in the Cascades. But it is relatively rare in the Oregon Coast Range. This particular specimen also seemed pretty large for a true fir - over 4 feet in diameter. As a result, Barry nominated the tree to be State Champion for its species through the Oregon Champion Tree Registry.

Recently the nomination was confirmed! The Registry uses a scoring system that combines circumference, height, and crown spread. The non-profit group Ascending the Giants, which verifies national champion trees by actually climbing them to get the most accurate measurements, maintains the Registry. If you think you've seen a champion tree, go to ascendingthegiants.com and compare your measurements with the state and national champions.

Trout Mountain Forestry

1800 NW Upshur St, Suite 201
Portland, OR 97209

Phone: 503-222-9772
Fax: 503-517-9990
Email: marla@troutmountain.com



A Balanced Approach

We're on the Web!
www.troutmountain.com

You can always find our newsletters at
troutmountain.com!

WE ARE ALWAYS UPDATING OUR DATABASE. PLEASE EMAIL MARLA@TROUTMOUNTAIN.COM IF YOU HAVE NEW CONTACT INFORMATION. ALSO, LET US KNOW IF YOU'D PREFER TO RECEIVE OUR NEWSLETTER ELECTRONICALLY IN THE FUTURE. THANKS.



Mixed Sources
Supporting responsible use of forest resources
www.fsc.org Cert no. SW-COC-1724



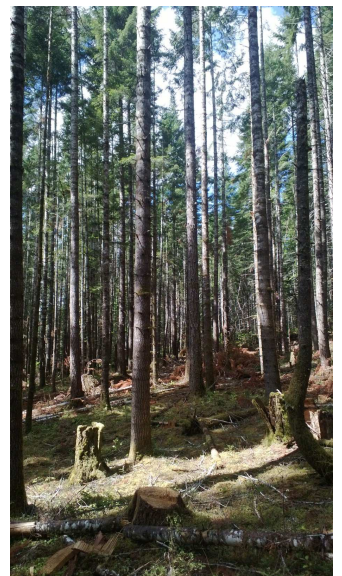
Join BLA—connecting
wood users to their local
forests—
www.buildlocalalliance.org

Fall Event—join us!!

Family Forestry Focus
Trout Mountain Forestry Field Day
Saturday, October 5th, 2013, 1-4 pm
Shiver River Forest Philomath, Oregon

Join us at this fantastic family property where sustainable forest management has been practiced consistently by 3 generations for nearly fifty years! At this 172-acre property nestled in the shadow of Marys Peak just west of Philomath, we will see:

- 2013 thinning harvest
- Uneven-aged management study site
- Large wood placement in Rock Creek
- Meadow management for prairie species
- Invasive weed control



Watch for a mailing coming soon with more details.
We hope to see you there!