



Trout Mountain Forestry Newsletter

ISSUE 7

MAY 15TH,
2012

HIGHLIGHTS:

Spring time has arrived!!

And what a spring it is! Remember how rainy it was this time last year? It's so wonderful to see so much of the sun. At Trout Mountain Forestry, we are gearing up for the biggest harvest season we can remember in a long time!



Stickworks

Patrick Dougherty is an artist who creates sculptures from materials found locally in nature. Last summer, we were contacted by his team to see if we knew of places where he might get good materials to work with for a sculpture at Oregon State University in Corvallis. It seemed like a perfect fit to donate a couple of truck loads of material from the Corvallis Forest, which we've been managing since 2006. Vine maple and bigleaf maple saplings were hand harvested from an area of the forest scheduled for commercial thinning. Materials were collected from other sources as well. The sculptures are now outside of OSU's College of Liberal Arts so check it out if you're in the area!



Stickworks	1
Summer/Fall Event	1
Logs and Loggers	2
Winter Easement	2
Cost Share	2
Log Market Update	3
The Lumberyard	3
Poem	3
Staff Updates	3
Introducing Matt!	4

Come visit us anytime:
1800 NW Upshur Street
Suite 201
Portland, OR 97209
Phone 503-222-9772
Fax 503-517-9990
www.troutmountain.com
marla@troutmountain.com



Join BLA—connecting wood users to their local forests—



OFFICE SPACE!!

Know anyone who's looking for a beautiful light filled inspiring office space? We have some to share. If you or someone you know might be interested, please get in touch with Marla at 503-445-0905 or marla@troutmountain.com and she'll give you all the details.

SUMMER/FALL LANDOWNER EVENT

We are very happy to have been awarded the contract to manage Portland Metro's Chehalem Ridge Property. At some point in the late summer or fall, we're hoping to invite you all out to see an example of cut-to-length harvesting. A lot of factors will determine when we can arrange for this so please...stay tuned...





Logs and Loggers

Log markets continue their sluggish trend upward. For a more in depth look at the market see the Log Market Update on page 3.

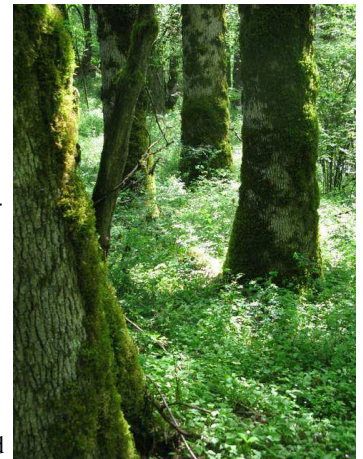
The real market news, we believe, is on the logging side. Harvest levels have fallen dramatically throughout the Recession, and a number of loggers have left the industry. As harvest levels pick up we find many loggers are booked. Prices and job lead-times are likely to rise as a result. Mills have significant idle capacity, which they can expand by merely adding a shift (or two), but logging and trucking is another story. While loggers may have bid rock-bottom prices to secure jobs at the bottom of the downturn, today they have aging iron to replace, operating reserve to bolster, and owners beginning to clamoring for cutting they want done. Log haulers are in a similar situation, faced with a fleet near capacity, high fuel costs, and a need to add more or newer trucks.

As tables shift during a recovering log market the value of long-term relationships become priceless. If you are contemplating a harvest it may be wise to begin making plans soon, with generous lead-time, well before the market peaks. A time may soon come when loggers can pick and choose the jobs to take, and you want to be one of their favored customers. Please contact us for help in structuring a successful harvest.

Winter Easement

Kathy Uhtoff is a dedicated family forest owner with an all-too-familiar problem: How to keep her beautiful 275-acre woodland in the family, when her adult nieces and nephew need to sell their 50% share in the enterprise. The “Winter Forest”-- named after her father who purchased the property over fifty years ago—is located in the Willamette Valley foothills near Lafayette Oregon, adjacent to the Trappist Abbey and several large vineyard ownerships. It’s an area of intense vineyard development, with high land values. If sold, it’s likely the forest would be cut and homes and vineyards would be put in.

The forest has been actively managed with the help of Trout Mountain forester Scott Ferguson for timber revenue and wildlife habitat for more than two decades. It has provided for the family as well as sustained wildlife that depend on oak woodland habitat. In response to the ownership dilemma, a unique partnership has been formed to support the establishment of a “working forest” conservation easement of the property. The neighboring cities of Dundee and Lafayette have passed resolutions in support, the local Soil and Water Conservation Board has agreed to hold and monitor the easement, and the US Fish and Wildlife Service will lend expertise and materials to maintain and enhance the forest habitat. If Scott’s easement funding application is successful, this team will remain involved with Kathy and her family as they work to keep the forest a vital part of the landscape and the local economy.



Lane & Linn Counties

A grant opportunity for family forestland owners in Linn and Lane Counties will fund noxious weed control. Funding is limited and work must be completed before the end



of September 2012. For more information contact Joe Arbow at Oregon Department of Forestry, [541-726-3588](tel:541-726-3588).



NRCS funds are awarded once each year, typically in fall, so now is the time plan projects and sign up.

COST SHARE funds may be available for the following activities:

- Management plans
- Forest stand improvement
- Slash treatment
- Tree/shrub planting
- Site preparation
- Designated skid trails
- Road closure/erosion control
- Prescribed burning
- Oak savanna/woodland restoration
- Fire/fuel breaks

Please get in touch for more information!

LOG MARKET UPDATE

The long anticipated recovery in the log market seems to be here as we see domestic Douglas-fir prices consistently at and above \$550. The domestic markets continue to be volatile, however, with dramatic price swings over relatively short timeframes as the gap between lumber and log prices has decreased. The export market has put some upward pressure on domestic prices and in some cases led to log shortages on the west coast, but as that market slows, more timber has become available to the domestic market.

The export market to Japan continues to be steady, if not as strong as it has been in the past, while the China market has not recovered from the drop in winter of 2011. Demand and a broader range of specifications has made the pole market more accessible than it has been in the past. We continue to keep our eyes on specialty markets (see Lumberyard story below) as those opportunities arise.

Perhaps the most exciting news in the area of log marketing is the sense of optimism that a recovery is really beginning to show itself in log pricing and market opportunity. Rapid changes in local markets continue to keep us on our toes, but it seems the worst is behind us.



Logs delivered to The Lumberyard

Unlike any lumber yard you may have seen before, this facility is actually an indoor mountain bike park located in Northeast Portland. This spring Barry and Mike delivered a load of Douglas-fir logs they cut at Camp Namanu to The Lumberyard, which they will be using to construct all kinds of ramps, jumps, and various other technical obstacles for the young adrenaline junkies among us. Imagine the look on people's faces when they saw a loaded log truck navigating the streets of Portland, reminiscent of the Stumptown of yore! These types of specialty markets make great

stories and we're glad we were able to work with The Lumberyard on this one. You can check the Lumberyard out for yourself at lumberyardmtb.com



Poem by Tang Dynasty poet Han Shan

Here is a tree older than the forest itself;
The years of its life defy reckoning.
Its roots have seen the upheavals of hill and valley,
Its leaves have known the changes of wind and frost.
The world laughs at its shoddy exterior
And cares nothing for the fine grain of the wood inside.
Stripped free of flesh and hide,
All that remains is the core of truth.



The poem and the picture came out of an email conversation among the Forest Grove Watershed Committee for updating the Watershed's Stewardship plan.

Staff Updates

Marla has been with Trout Mountain Forestry since we were in our first couple years of business. Trout Mountain has been growing over our 6 years in business. Marla has helped make this possible by managing the office, keeping up our finances and creating systems to make

our day to day operations run smoothly. Embarking on her 5th year with us, Marla has taken on more serious responsibilities and we've acknowledged that by promoting her to Business Manager. Here's Marla (left) at Trout Mountain headquarters in Portland.



Blog!

Have you checked out our website lately? We are working on restructuring the whole thing little by little so that in the near future we'll have current stories and pictures about all of the interesting clients and beautiful forested properties we get to work with. For now, take a look at our new blog. Click on the "news" tab at www.troutmountain.com and it'll take you there. We're updating it regularly and we'd love for you to comment and get involved in the conversations we're starting.



Trout Mountain Forestry

1800 NW Upshur St, Suite 201
Portland, OR 97209

Phone: 503-222-9772

Fax: 503-517-9990

Email: marla@troutmountain.com



A Balanced Approach



Mixed Sources

Supporting responsible use of forest resources

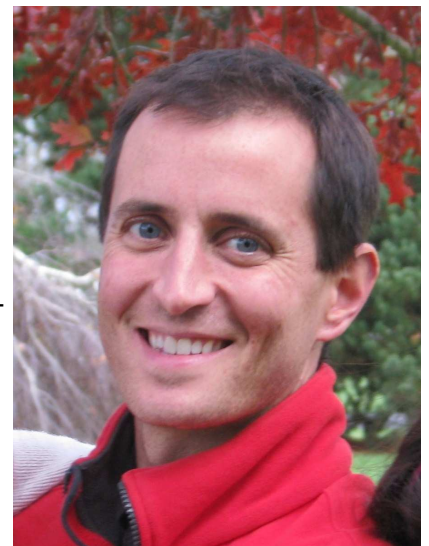
www.fsc.org Cert no. SW-COC-1724

WE ARE ALWAYS UPDATING OUR DATABASE. PLEASE EMAIL MARLA@TROUTMOUNTAIN.COM IF YOU HAVE NEW CONTACT INFORMATION. ALSO, LET US KNOW IF YOU'D PREFER TO RECEIVE OUR NEWSLETTER ELECTRONICALLY IN THE FUTURE. THANKS.

New Forester, New Office!

Trout Mountain Forestry is very happy to welcome our friend and colleague, Matt Fehrenbacher to our team. It feels like old news to us, because Matt joined us in December and it now feels like he's always been here. Matt has been managing private forestlands in Western Oregon for over 15 years. Like the rest of us at Trout Mountain, Matt strives to implement silvicultural strategies that strike a balance between the economy and ecology of the working forest landscape.

Trout Mountain is also excited to announce the opening of a second office location in Corvallis. Matt will be based at the Corvallis office, along with Mark Miller. The Corvallis office is located at 2380 NW Kings Blvd, suite 103. Stop in and visit if you're in the neighborhood!



We're on the Web!

www.troutmountain.com